

# Sheringham Shoal

by Scira Offshore Energy

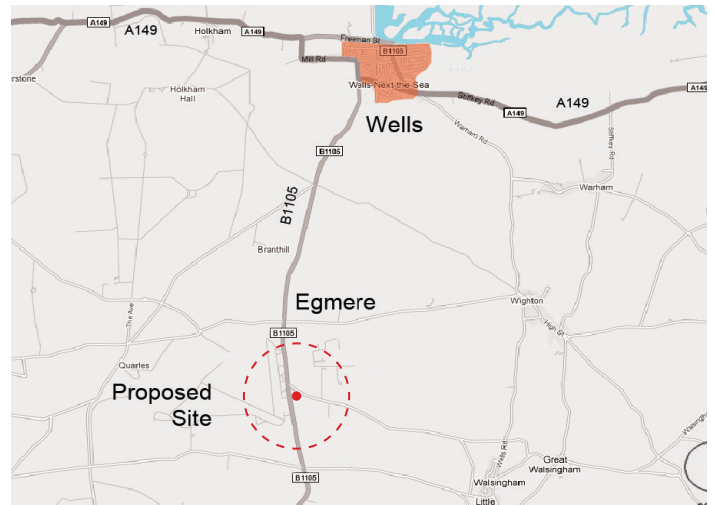
April 2012

## Wells-next-the-Sea operational base

The construction of the Sheringham Shoal Offshore Wind Farm, located due north of Sheringham, is almost complete. With most of the infrastructure and around half of the turbines in place, it will gradually become fully operational and will require daily ongoing maintenance.

Teams of wind turbine technicians will travel by personnel transfer vessel to and from the outer harbour in Wells-next-the-Sea to carry out maintenance work on the wind farm's turbines every day. These technicians, together with the rest of the team required to operate the wind farm will be based at a new office and warehouse facility, three miles south of the harbour at Egmere.

Construction has now started on the state-of-the-art base which will include an office, warehousing, a service yard, landscape gardening and adequate parking for staff and visitors.



### Operational base key facts

Location:	3 miles south of Wells-next-the-Sea
Size:	0.97 hectares (2.39 acres)
Work start:	early 2012
Completion:	by end 2012
Contractor:	Mansell Construction Services Ltd, Swaffham
Architect:	LSI Architects, Norwich
Employees:	average 50, peak 80 during construction 50 permanent positions when operational



Aerial artist impression.

# Frequently asked questions

## Where is the base?

The site is located three miles south of Wells-next-the-Sea just off the B1105 to Fakenham. It is situated on part of the Walsingham Estate in Egmere.

## What is the construction timetable?

Pre-preparation works at the 0.97 hectares site (2.39 acres), started in January. The work involved the diversion of existing powerlines, which were replaced with underground cables to enable utilities and services to be brought on to the site. Completed in February, this work by UK Power Network will also enable Mansell and its sub-contractors safe site access.

Mansell began initial groundworks in February this year while completion is scheduled before the end of the year.

## How will this development affect traffic - during construction and in the long term?

During the construction of the facility, three to four delivery lorries will arrive and depart each day during the week, excluding weekends, with around 15 contractors' cars and small vans on-site.

Once completed and occupied, up to 32 cars will park there each day and two minibuses will transport workers from the site, to the new outer harbour at Wells-next-the-Sea, and back each morning and evening. There will also be deliveries by vans each day and deliveries by HGVs each week.

## Who will build this?

After a competitive tender process, the North Norfolk operation of Mansell Construction Services Ltd. was selected to be main contractor for the construction of the base.

Part of the global Balfour Beatty Group, Mansell is based at Swaffham's Ecotech Innovation and Business Park and employs a total of 100 people. The firm will also utilise its own employees as well as a number of sub-contractors, primarily locally based firms with experience in the type of functions required.

## How can local companies be involved with the construction?

Mansell will determine their sub-contracting requirements and look to local sub-contractors to form part of their supply chain. Local companies wishing to register their interest in working as sub-contractors with the project can do so directly with Mansell or via the supplier database registration form on the contact page of [www.scira.co.uk](http://www.scira.co.uk).

## How many people will work there?

During construction, there will be up to 80 people on site working with both the main contractor and sub-contractors. Whether



Artist impression.

these will be current employees or new positions, will depend on Mansell and the sub-contractors selected.

Once the facility has been completed it will be home to the 50 strong wind farm operation's team, most of whom will work on offshore maintenance at the wind farm during the day.

## When will Scira move in?

Scira aims to start the move out of the temporary offices in Polka Road, Wells-next-the-Sea and into the newly constructed facility by the end of the year.

## What are the environmental features of the design?

The building will have very low energy consumption, with key features including: low energy lighting, highly insulated walls and roofs, a "green" roof to reduce rainwater run-off, and greywater recycling of rainwater to flush toilets. There will be a minimum of 10% on-site renewable energy sources using Low to Zero (LTC) technologies such as photovoltaic cells and solar water heater collectors for electricity and water heating respectively. The site waste management plan will aim for up to 90% of site waste to be diverted from landfill and it will have a targeted Building Research Establishment Environmental Assessment Method (BREEAM) rating of "Excellent".

## Where will the production materials come from?

Construction materials will be responsibly sourced while locally supplied and manufactured items will be specified wherever possible.

## For further information

If you would like to know more about the construction project, please contact:

Mansell Construction Services Ltd. T: 01760 721388  
via post Roman House, Turbine Way, F: 01760 724693  
Ecotech Innovation and Business Park,  
Swaffham PE37 7XD.

However if you would like further information about the wind farm and its operation, please go to [www.scira.co.uk](http://www.scira.co.uk), email [info@scira.co.uk](mailto:info@scira.co.uk) or visit the information point at 18 Staithe Street, Wells-next-the-Sea which is open Tuesday – Friday, 10:00am – 3:00pm and Saturday 10:00am – 1:00pm.